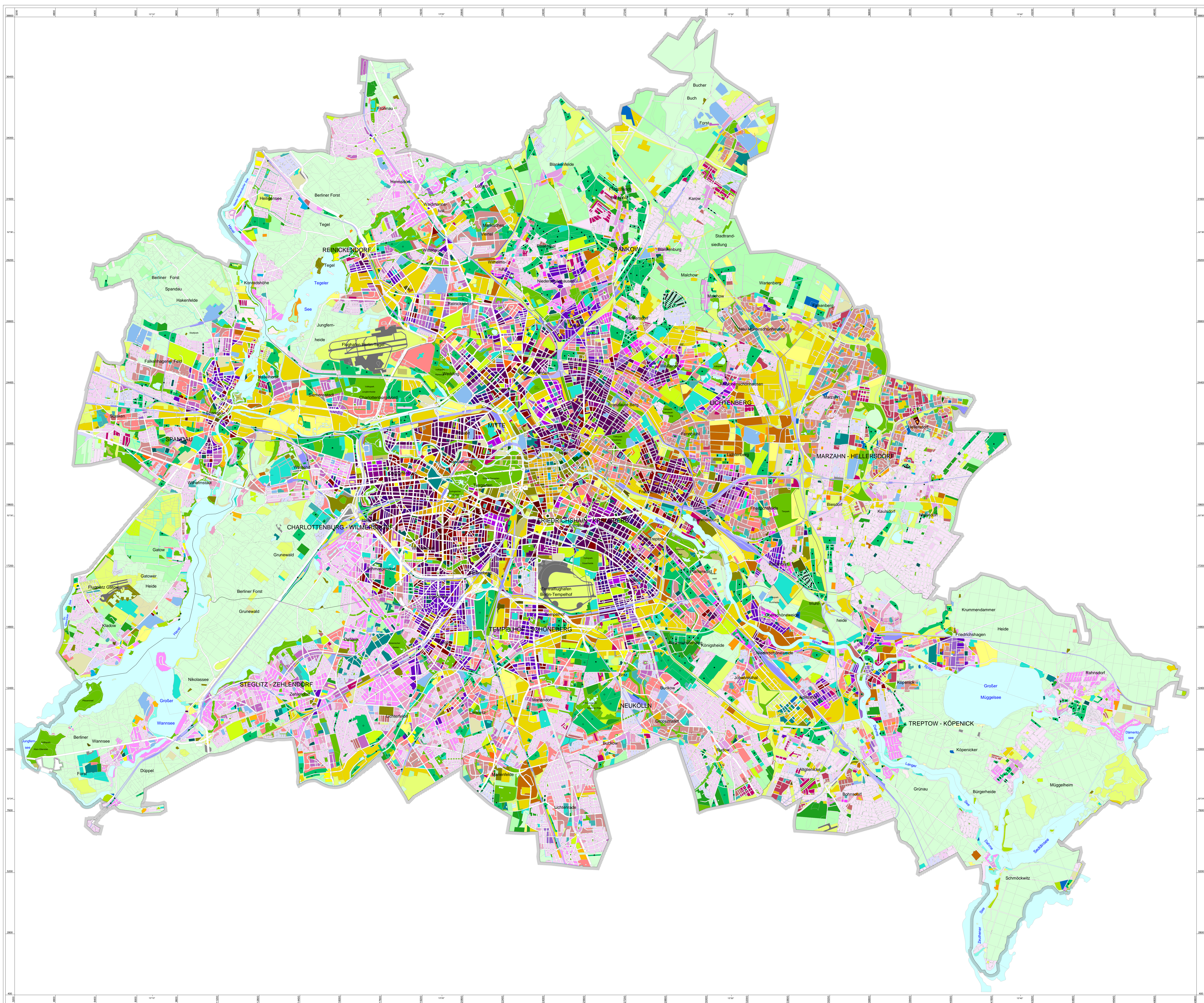


Urban Structure - differentiated



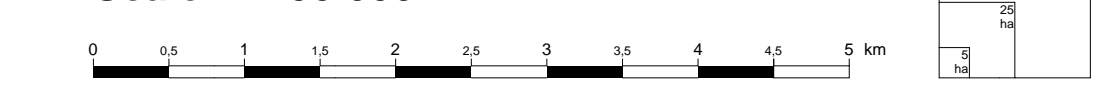
- High-density residential areas (built before 1945)**
 - 83% Closed courtyard
 - 76% Courtyard
 - 73% Preservation-oriented rehabilitation
 - 62% Decorative or garden courtyard
 - 61% De-coring rehabilitation
 - 59% Shed court
 - 50% Large courtyard + Row houses of the '20s and '30s (in East-Berlin only large courtyard)
 - 48% Row houses of the '20s and '30s (only East Berlin)
- High-density residential areas (built after 1945)**
 - 65% Uncoordinated reconstruction
 - 63% Post-war block-edge
 - 57% Compact residential estates of the '90s, 4 storeys and more
 - 51% Concrete pre-fab buildings of the '80s and '90s
 - 47% Expansive residential estates of the '90s, (single family, duplex, row houses up to 3 storeys)
 - 45% High-rise, large residential estate
 - 40% Apartment buildings of the '50s and later
- Low-density residential areas**
 - 34% Village
 - 34% Gardens /Semi-private green space
 - 31% Park-like garden
 - 29% Row-houses with garden
 - 28% Garden
 - 23% Open residential buildings
 - 22% Weekend house areas
- Commercial, service use, small business and industrial use**
 - 80% Commercial area with dense construction
 - 79% Mixed area II with dense construction
 - 77% Core areas
 - 64% Commercial area with sparse construction
 - 60% Mixed area II with sparse construction
 - 51% Supply / waste disposal
 - 36% Mixed area I
- Traffic areas**
 - 59% Railway facilities
 - 44% Rail Lines
 - 85% Airports
 - 50% Parking lots
 - 36% Other traffic areas
- Public service and other special uses**
 - 63% Postal service
 - 54% Administration
 - 50% Culture
 - 39% Safety and order
 - 54% Schools, old buildings (built before 1945)
 - 49% Universities and research institutions
 - 48% Schools, new buildings (built after 1945)
 - 42% Schools (age unknown)
 - 45% Senior citizens' homes
 - 36% Day-care centers
 - 21% Youth recreation centers
 - 38% Community services
 - 36% Churches
 - 36% Hospitals
 - 36% Sports facilities
 - 33% Water sports
- Green and open spaces**
 - 39% Urban squares / promenades
 - 29% Tree nurseries / horticulture
 - 28% Allotment gardens, general
 - 22% Allotment gardens with low service area share
 - 19% Allotment gardens with high service area share
 - 9% Parks, green spaces
 - 9% Camp sites
 - 8% Cemeteries
 - 2% Fallow areas
 - 0% Farmland
 - 0% Forests
- Other Section Types**
 - 27% Construction sites
 - 0% Water
 - 00% Degree of impervious coverage (sealing)

1. This presentation is focused on the different structure types (section types) in predominantly residential areas. They are defined by their structure of development, open spaces and age of the buildings.
 In all non-residential section types age and structure of construction are irrelevant. They do not have any characteristic appearance, but only a typical signature of use.
 In Environmental Atlas maps 06.01 "Actual Use of Built-Up Areas" and 06.02 "Inventory of Green and Open Spaces" they are presented separately.

2. Altogether, 62 section types were designated, and were assessed and represented on basis of the categories in the IGL records. The categories correspond to the statistical blocks, which were further subdivided, in cases of different use within a block, into uniform-use block segments.

3. The section types - within their main categories - are arranged according to a decreasing percentage of sealed-up area. This gradation is represented by the shade of the colour.
 (See Environmental Atlas map 01.02 "Impervious Soil Coverage", edition 2007).

Scale: 1 : 50 000



Published by: Senate Department for Urban Development
 Special Section Communication

Conception: III F 1 Informationssystem Stadt und Umwelt, Umweltdatals
 Text: III F 1
 Data: - Datengrundlagen der Karten 06.01/02 der Ausgaben 1995, 2002, 2004 und 2007
 - Aktualisierung der digitalen Grundkarte des Informationssystems Stadt und Umwelt (ISU), GeInfo - C-Nutzer, in Auftrag der Senatsverwaltung für Stadtentwicklung, III F 1, 2006, 2007
 - Blockänderung des Statistischen Landesamtes 2002 - 2005
 - Digitale Luftbilder (Orthophotos) 2004 und 2006, Senatsverwaltung für Stadtentwicklung, Abteilung II

Data Processing: III F 1 unter Verwendung des Informationssystems Stadt und Umwelt (ISU), GeInfo - C-Nutzer
 Based on Map: - Blockkarte 1 : 50.000 (ISU), Stand 31.12.2005
 End of Work: February 2008
 This map is copyright protected
 Reprinting or any other form of reproduction only with prior permission
 Edition 2008
 Internet-Address: <http://www.stadtenwicklung.berlin.de>