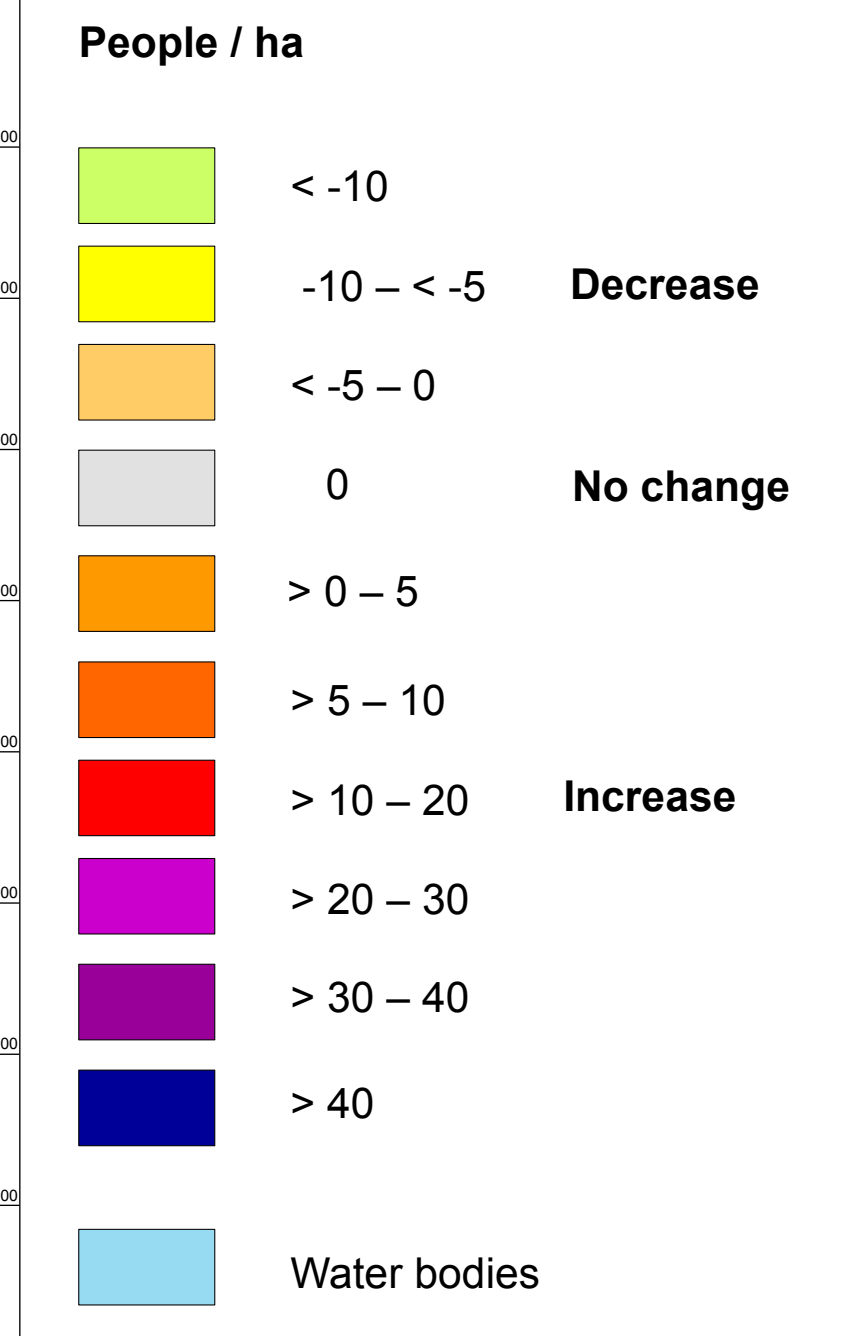
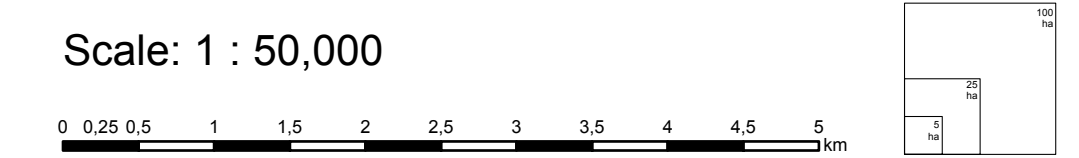
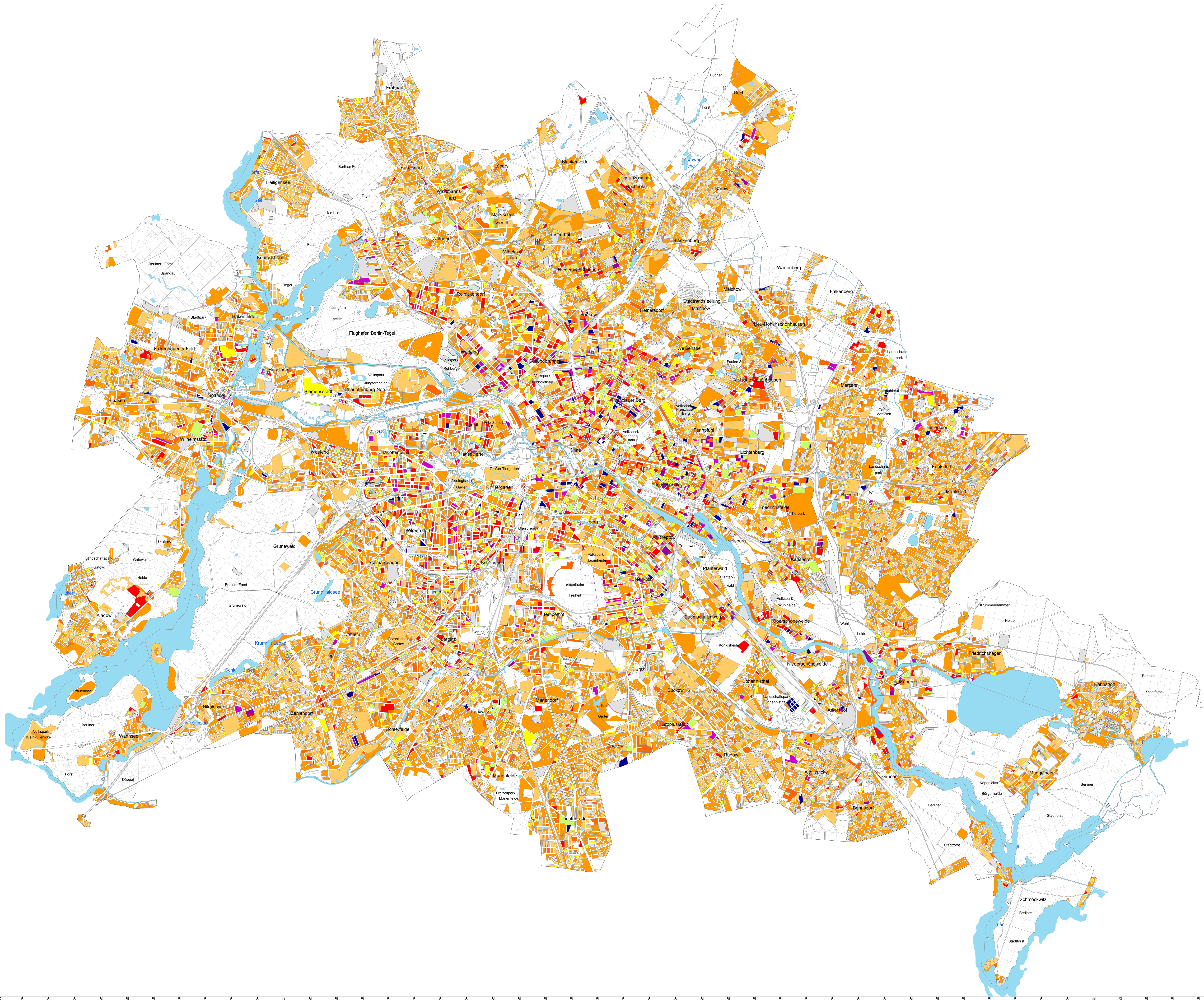


**Population Density  
Development between 2016 and 2017**



1. This map illustrates changes in p/ha between 2017 and 2016 for block/block segment areas as used in the Urban and Environmental Information System (ISU). These areas correspond to the statistical blocks of the Statistical Office of Berlin-Brandenburg (as of December 31, 2015), which, in case of non-uniform use within a block, are subdivided further into segments with a minimum of size of 1 ha. The population data refers to the inhabitants legally registered at the place of their main residence on December 31 for both years.  
2. The population data refers to the inhabitants legally registered at the place of their main residence on December 31 for both years.  
3. Between December 31, 2016 and December 31, 2017, the population of Berlin increased by more than 42,000.



**Published by: Senate Department for Urban Development and Housing**  
Communication

Conception: III D 1 - Environmental Atlas

Data: - Legally registered inhabitants at the primary place of residence in Berlin, Statistical Office for Berlin-Brandenburg, as of December 31, 2017  
- Data base for actual use of the Information System Urban and Environment, as of December 31, 2015, III D 1

Data processing and map production: III D 1, Andreas Machate

Status on revision: April 2018  
Based on map: Block map 1 : 50,000 (ISU50, territorial reference Environmental Atlas 2015)  
Coordinate System: ETRS89 / UTM Zone 33N, EPSG: 25833  
Edition 2018  
Internet-Address: <http://www.stadtenwicklung.berlin.de>