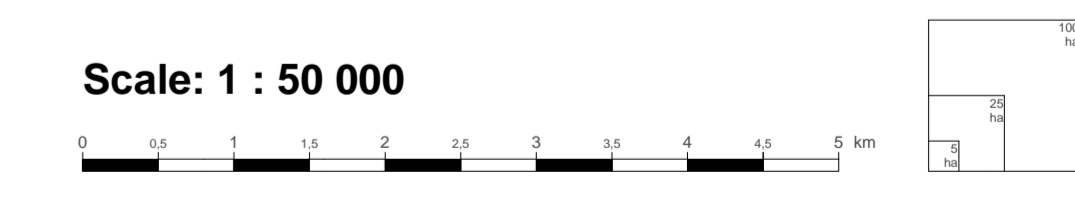
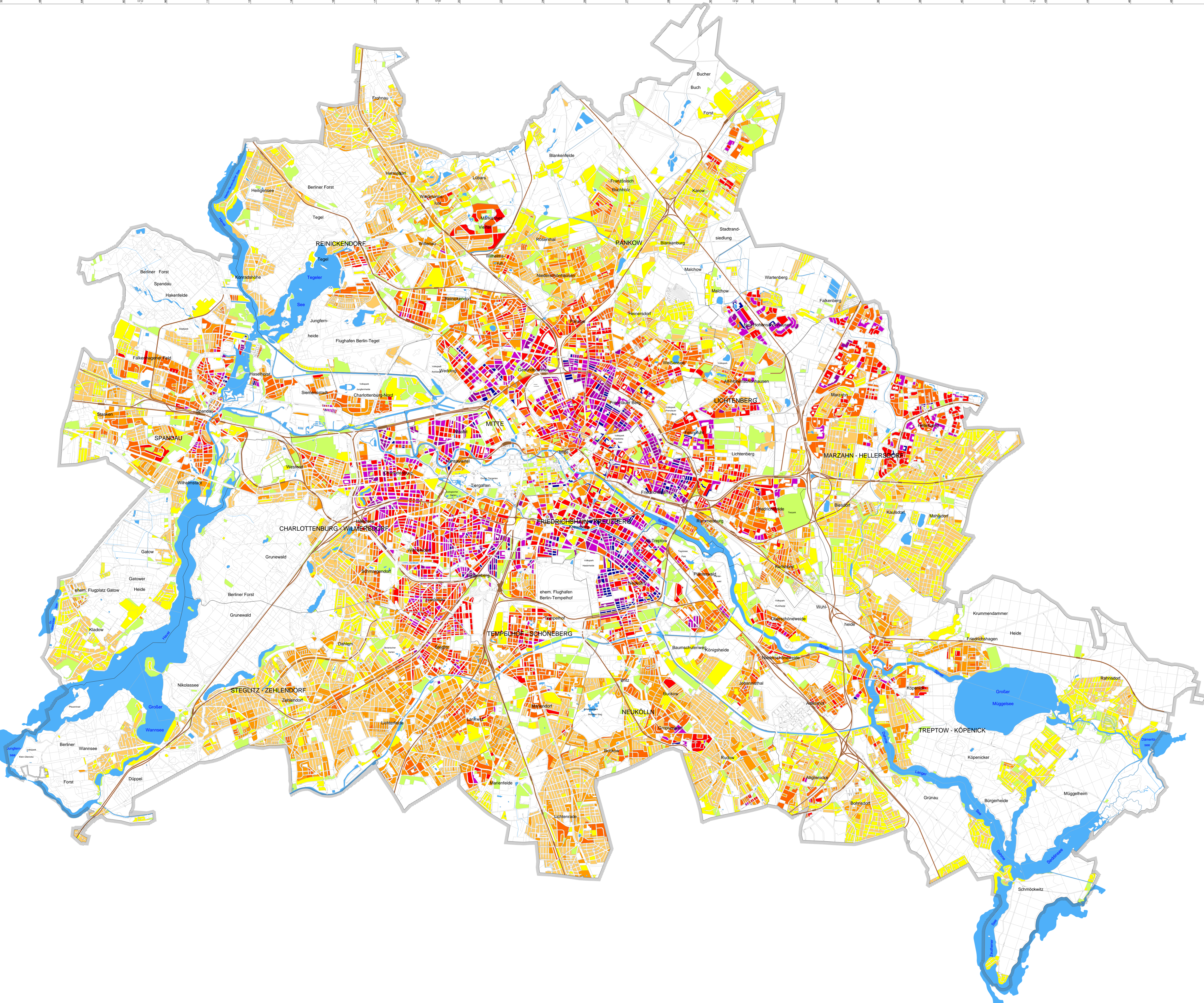
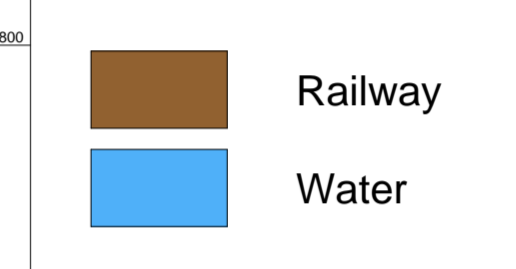
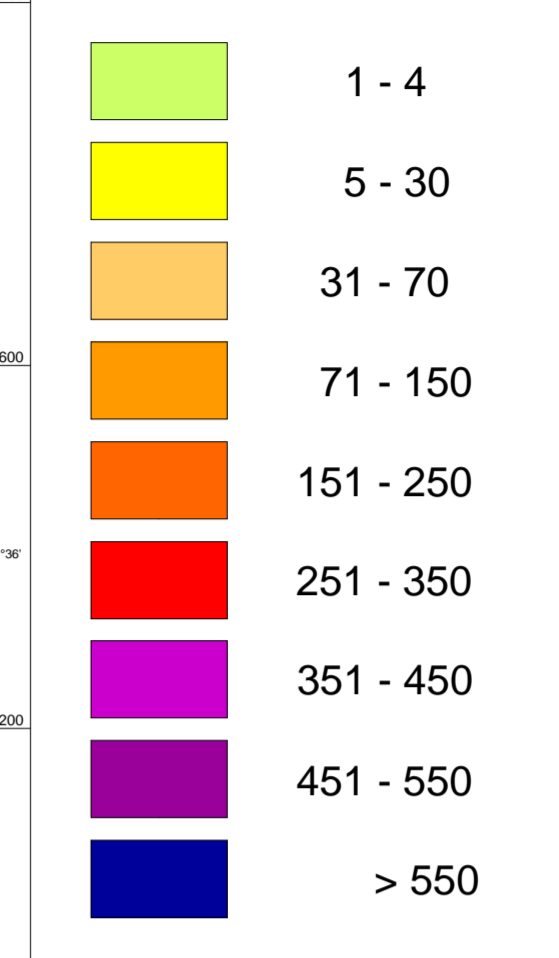


## Population Density

Inhabitants / hectare



**Published by:** Senate Department for Urban Development  
Special Section Communication

**Conception:** Unit III F 1 Environmental Atlas  
**Data:** - Mandatorily registered residents with Berlin to be their main place of residence, reference date from 31.12.2010, State Statistical Agency Berlin-Brandenburg edition 2011  
- Data on basis of the uniform spatial reference system of the information system urban and environment (ISU), Senate Department for Urban Development III F, edition 2010

**Data processing and map production:** Andreas Machate, III F using the ISU Berlin  
**Colour scheme:** III F 1  
**Status of revision:** June 2011  
**Based on the map:** Digital block map of Berlin 1 : 5,000 (ISUS), version 31.12.2010

This map is copyright protected. Reprinting or any other form of reproduction only with prior permission.  
Revised edition 2011  
**Internet-Address:** <http://www.stadtentwicklung.berlin.de>