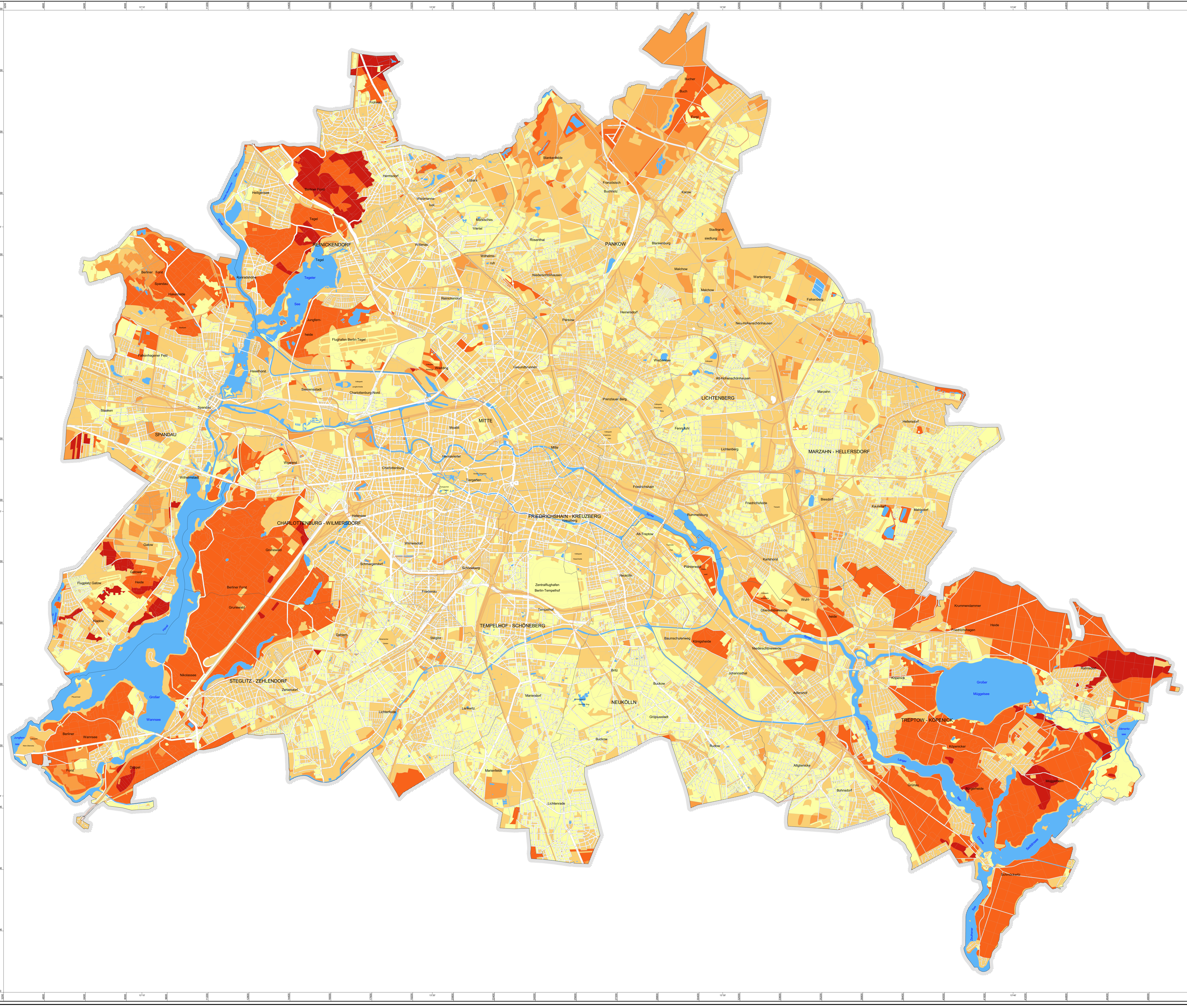
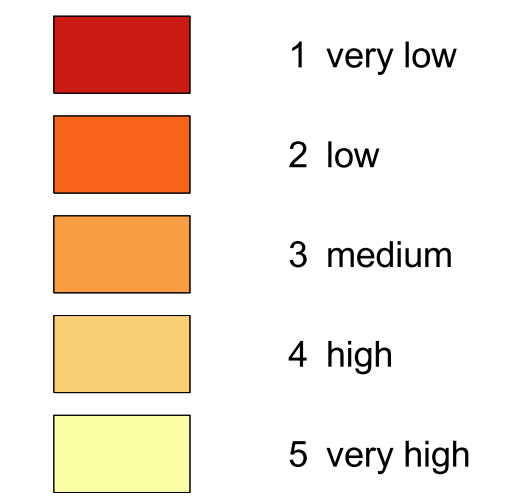
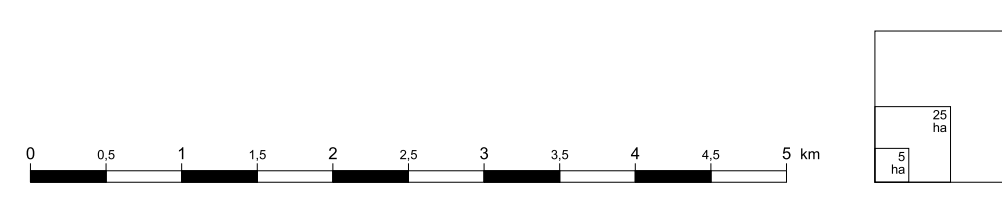


Binding Power for Heavy Metals

Binding Power



Scale: 1 : 50 000



Published by: Senate Department for Urban Development
Special section communication

Conception: III F 1 Urban and Environmental Information System (ISU), Environmental Atlas
 Database: - Soil Data from ISU 2005 and 2008
 - Impervious Soil Coverage (Sealing of Soil Surfaces) from ISU 2005
 Data processing: III F 1 using the ISU Berlin, J. Gerstenberg
 Map production: J. Gerstenberg, C. Nitzsche
 Status of revision: February 2009
 Based on the map: Digital Bloc Map of Berlin 1 : 50.000 (ISU50), version 31.12.2005

This map is copyright protected.
 Reproducing or any other form of reproduction only with prior permission.

Revised edition 2009
 Internet-Address: <http://www.stadtentwicklung.berlin.de>