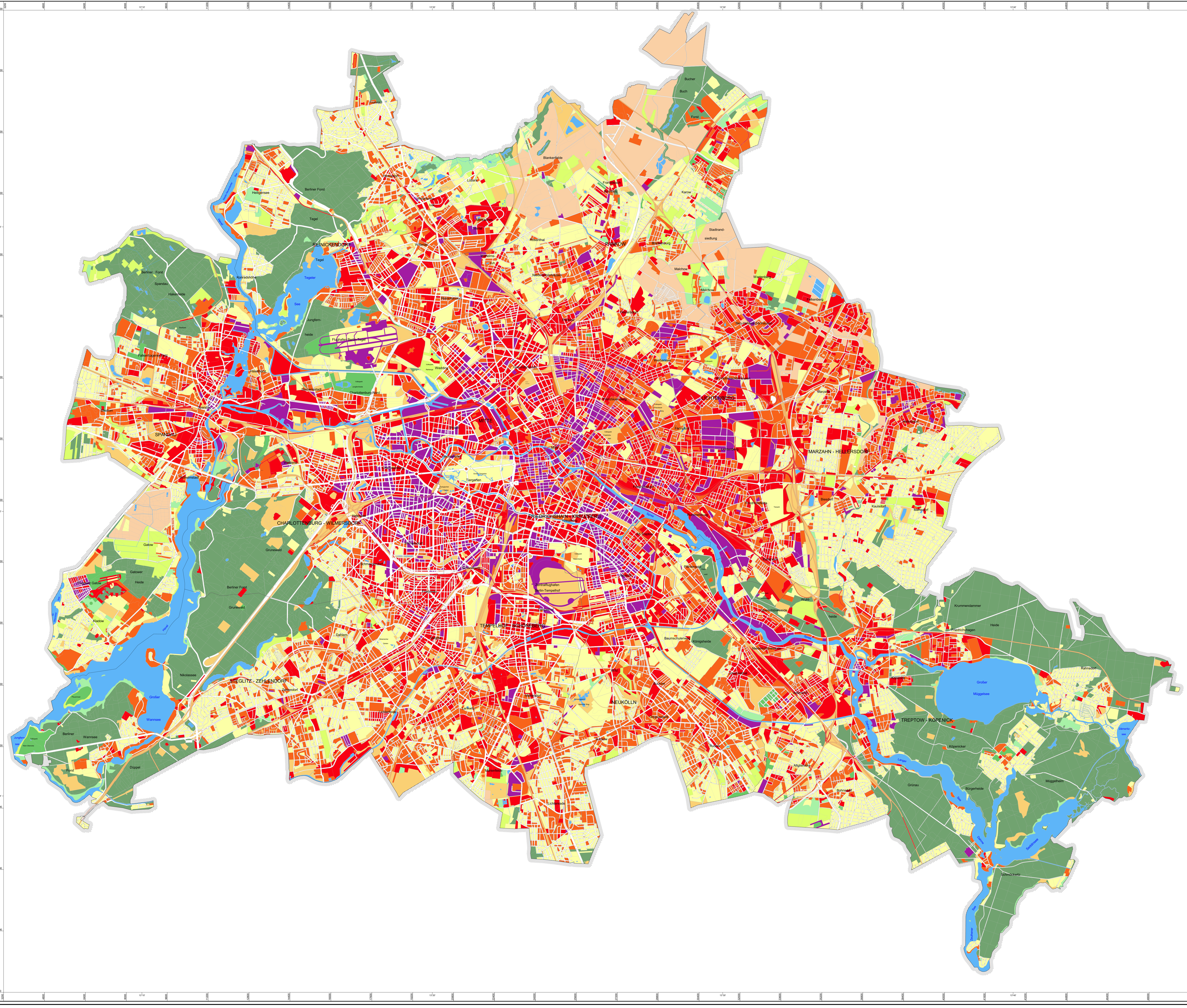


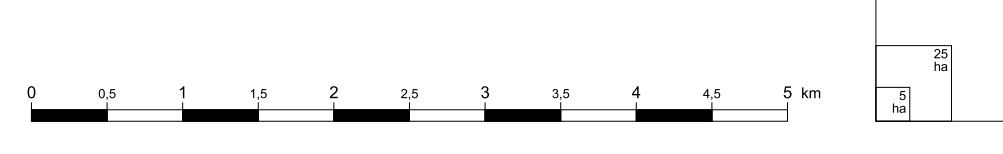
Near - Natural Quality

Size of Ground Variation +)	Exemplary Land use	Criteria	Near Natural-ness
not changed	no occurrence in Berlin		very high
very little changed	no occurrence in Berlin		
1 somewhat changed	Forest	Natural grown soil with little human influence	high
2 little to moderately changed	Park in outside area (z.B. Landschaftspark)	Topsoil negligibly influenced by human	medium
3 moderately changed	Meadows and Pastures	Topsoil influenced by human	
4 moderately changed	Farmland	Topsoil influenced by human	
5 moderately changed	Park, Greenspace, Graveyard, Allotment garden (on abrasion area or on deposit area), Camping place, Residential area with sealing <30%	Topsoil and somehow subsoil moderately influenced by human (partly soil deposit)	
6 strongly changed	Former Sewage Plant	Topsoil (strong), Subsoil moderately influenced by human	low
7 very strongly changed	Park in inside area (Plantments on deposits), Allotment garden (on abrasion area or on deposit area), Vacant area, Army training area, Open cast mining, Train area	Overall strongly changed soil due to ground construction, predominantly deposited area.	
8 extreme strongly changed	Sport area, Outdoor swimming area, Residential area *) with sealing between 30 and 60 %	Overall strongly changed soil due to ground construction, predominantly deposited area	very low
9 extreme strongly changed	City square, Railroad embankment, Residential area *) with sealing > 60%	Overall very strongly changed soil due to ground construction predominantly deposited areas	
10 extreme strongly changed	Residential area *) with sealing > 90%	By abrasion and deposition totally changed soil due to compaction.	

*) Evaluation of the Near-Naturalness based on Hemerobitics from Blume and Sukopp (1976) and Grenzius (1985).
 *) Residential area includes following land uses: Living area, Mixed area, Commercial and Industrial area, Public facilities, Utilities area and Traffic area.
 Remarks: Category 1-5 are close to near natural soil properties, category 6-10 are influenced by human (cf. Environmental Atlas map 01.01 Soil Associations).



Scale: 1 : 50 000



Published by: **Senate Department for Urban Development**
 Special section communication

Conception: III F 1 Urban and Environmental Information System (ISU), Environmental Atlas
 Database: - Soil Data from ISU 2005 and 2008
 - Impervious Soil Coverage (Sealing of Soil Surfaces) from ISU 2005
 Data processing: III F 1 Using the ISU Berlin, J. Gerstenberg
 Map production: J. Gerstenberg, C. Nitzsche
 Status of revision: February 2009
 Based on the map: Digital Bloc Map of Berlin 1 : 50.000 (ISU50), version 31.12.2005

This map is copyright protected.
 Reproducing or any other form of reproduction only with prior permission.

Revised edition 2009
 Internet-Address: <http://www.stadtentwicklung.berlin.de>

01.11.3