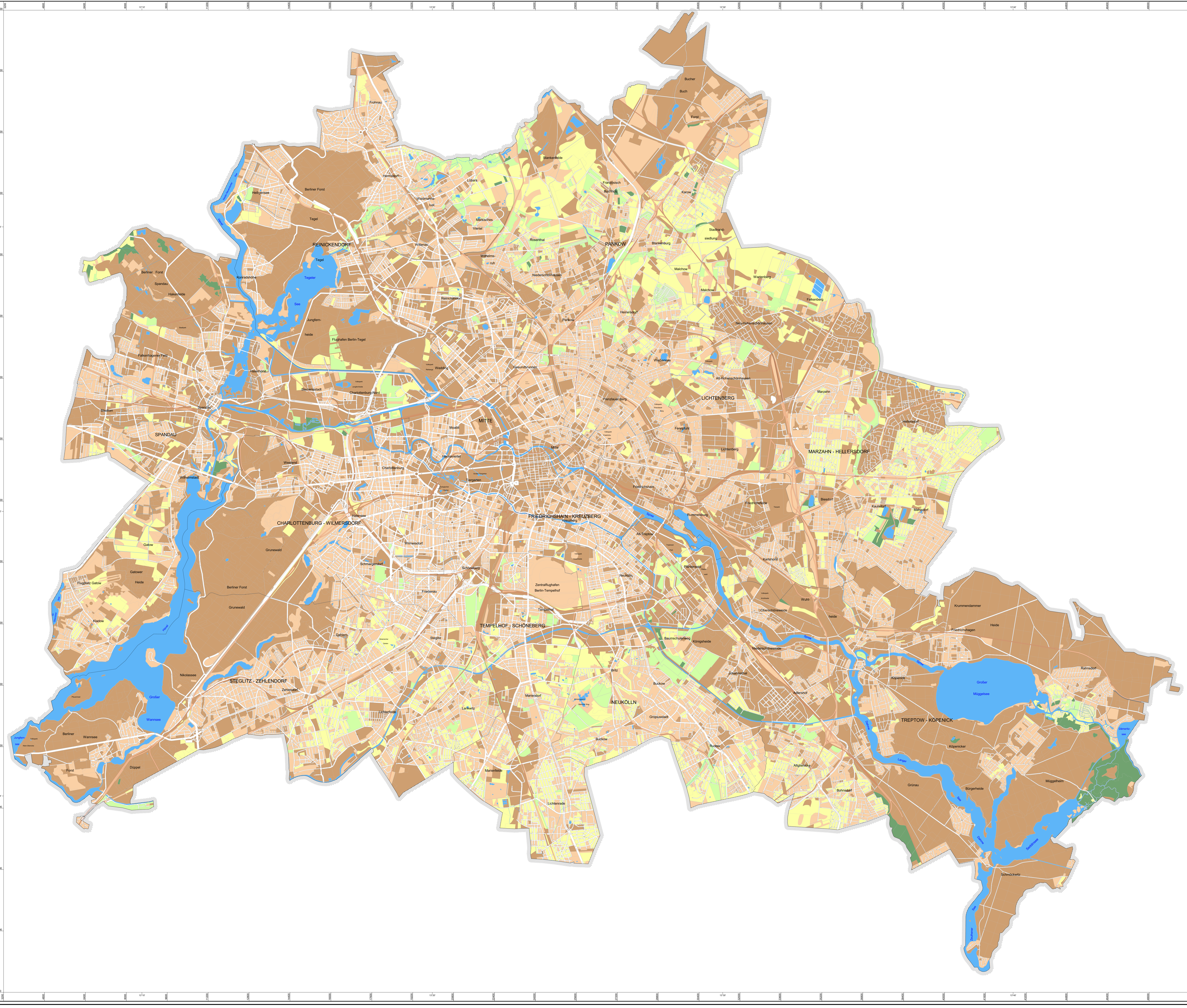
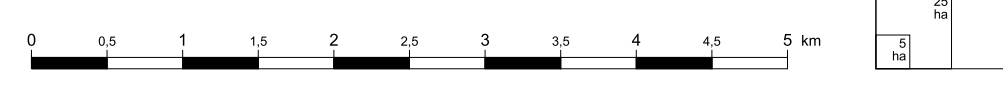


**Nutrient Storage Capacity /
Pollutant Binding Capacity
and Ascertained Effective Cation Exchange
Capacity (KAKeff)**

KAKeff [cmolc / kg]	KAKeff Level	Nutrient Storage Capacity Pollutant Binding Capacity
0 - < 4	1 very low	low
4 - < 8	2 low	
8 - < 12	3 medium	medium
12 - < 20	4 high	high
≥ 20	5 very high	



Scale: 1 : 50 000



Published by: **Senate Department for Urban Development**
Special section communication

Conception: III F 1 Urban and Environmental Information System (ISU), Environmental Atlas
Database: - Soil Data from ISU 2005 and 2008
- Impervious Soil Coverage (Sealing of Soil Surfaces) from ISU 2005

Data processing: III F 1 using the ISU Berlin, J. Gerstenberg
Map production: J. Gerstenberg, C. Nitzsche
Status of revision: February 2009
Based on the map: Digital Bloc Map of Berlin 1 : 50 000 (ISU50), version 31.12.2005

This map is copyright protected.
Reprinting or any other form of reproduction only with prior permission.

Revised edition 2009
Internet-Address: <http://www.stadtenwicklung.berlin.de>