



**EUROPEAN UNION**  
European Social Fund

Senate Department  
for Economics, Energy  
and Public Enterprises

**BERLIN**



# THE EUROPEAN SOCIAL FUND IN BERLIN

Insight into ten special projects



[www.berlin.de/esf](http://www.berlin.de/esf)





# CONTENTS

The European Social Fund in Berlin .....	5
UBINZ - helping recently arrived migrants to integrate into the labour market.....	6
BHT - Berlin Startup Scholarship.....	8
FSJ Kultur - Community service volunteering year in a cultural project.....	10
FÖJ - Community service volunteering year in an ecological project.....	12
Cooperative Mensch.....	14
Sozial 2.0 - rediscovering careers in social care!.....	16
Zukunft im Beruf (ZiB) - career guidance at vocational colleges .....	18
Soulincubator II .....	20
Köpenicker Bienenfreunde.....	22
JOBLINGE - Plan A.....	24
Legal Notice.....	26



# THE EUROPEAN SOCIAL FUND IN BERLIN

The European Social Fund (ESF) is Europe's main employment-related funding instrument. The fund was established as part of the EU Member States' economic and social cohesion policy. In practical terms, the ESF funds hundreds of projects in Berlin that are committed to the social integration of disadvantaged groups, to helping people to gain the skills and qualifications they need to find a job, to reducing youth unemployment as well as to improving the general level of education and vocational training of the people who live in the federal state of Berlin. Most of the beneficiary organisations that organise and manage the funding of these projects are community group organisations, local government bodies, companies as well as research institutions and education providers.

In the funding period 2014-2020, for which applications may still be made until the end of 2023, a total of 215 million EUR will be invested in the citizens of Berlin. In the funding period 2021-2027, education, social inclusion and securing a skilled labour base continue to be the funding programme priorities. Berlin is amongst the first regions in the EU to have the programme for the funding period 2021-2027 approved, after submitting its programme proposal in December 2021. Starting in mid-2022, the practical realisation of the funding instruments has commenced.

You can learn more about some of the projects funded by the ESF in Berlin on the following pages.

The ESF in Berlin hopes that you will enjoy reading about them!



# UBINZ – HELPING RECENTLY ARRIVED MIGRANTS TO INTEGRATE INTO THE LABOUR MARKET

Many of Berlin’s young migrants often face the challenge of finding the career that’s right for them. Their entry into the labour market is also made more difficult if they do yet not speak German well enough.

## IMPROVEMENT OF THEIR SITUATION IN LIFE

The project “UBINZ” helps migrants to improve their command of the German language, offers career advice and work experience placements or internships. Throughout the entire process, the young people receive intensive and individualised social as well as pedagogical support.

## THE ESF IMPROVES PEOPLE’S PROSPECTS

This support gives the participants access to new career paths and increases their chances of successful employment and participation in society.

## SPECIFICALLY, THE ESF THEREFORE PROMOTES ...

- ... the integration of young migrants in the labour market.
- ... the overcoming of the skilled worker shortage.

## FUNDING AT A GLANCE

### Funding priority:

Objective C, investing in education, training and vocational training for skills and life-long learning

### Förderinstrument:

19B: Promotion of careers advice and the qualification of migrants as well as their social integration and combating the poverty of recently arrived migrants, including Roma and refugees

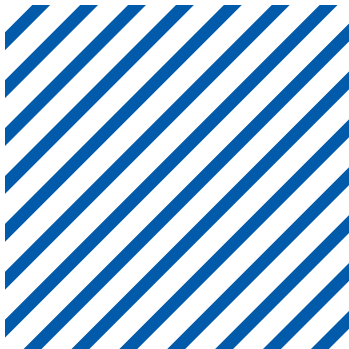
**Project period:** 1 January 2021–31 December 2021

**ESF funding:** €400.000

**Beneficiary organisation address:** [www.gfbm.de](http://www.gfbm.de)

**“UBINZ HELPS YOUNG MIGRANTS TO GAIN ACCESS TO THE LABOUR MARKET“**

Susann Schmidtke, Project Manager, UBINZ



# BHT - BERLIN STARTUP SCHOLARSHIP

The motto of Berlin’s university of applied sciences BHT is “City of the Future”. The scholarship is aimed at students who have an idea for a startup that may have a long-term impact on Berlin as a “City of the Future” prior to their graduation from the university. The Berlin Startup Scholarship helps graduates to develop their startup idea further up to market-readiness.

## THE VARIETY OF STARTUP IDEAS IS UNLIMITED

The startup scholarship supports an extremely varied range of startup ideas. The spectrum is as varied as the university’s various specialist departments. The scholarship recipients always work with a mentor.

## THE ESF IMPROVES PEOPLE’S PROSPECTS

The Berlin Startup Scholarship facilitates the financing of startup ideas; the startup founders do not have to borrow money or hand over shares in their business. Establishing a business and creating jobs for a modern, sustainable “City of the Future” also benefits Berlin as a business location.

## SPECIFICALLY, THE ESF THEREFORE PROMOTES ...

- ... the realisation of technology- and knowledge-based startup ideas by young people.
- ... the commitment of young people to a “City of the Future” that is sustainable, to taking social responsibility and to creating economic added value with their startup idea.

## FUNDING AT A GLANCE

### Funding priority:

Objective A, promotion of long-term and high-quality employment and promotion of workforce mobility

### Funding instrument:

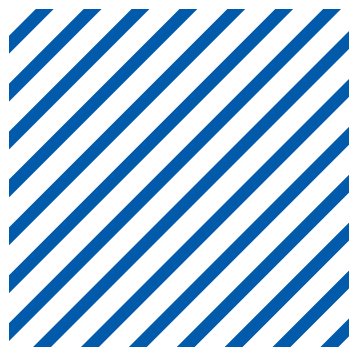
6: Startups at higher education establishments

**Project period:** 1 January 2020-31 December 2021

**ESF funding:** €615,091.55

### Beneficiary organisation internet address:

[www.bht-berlin.de](http://www.bht-berlin.de)







**“THE BERLIN STARTUP SCHOLARSHIP GIVES US THE OPPORTUNITY TO GIVE INNOVATIVE STARTUP IDEAS THE CHANCE TO GROW EVEN AT THE VERY EARLY STAGES.”**

Elli Strauven-Dejean,  
Head of the Technology Transfer Department, BHT

# FSJ – COMMUNITY SERVICE VOLUNTEERING YEAR IN A CULTURAL PROJECT

For many young people, a community service year spent volunteering in a cultural project („Freiwilliges Soziales Jahr im Bereich Kultur, FSJ Kultur“) is a stage in their lives that often determines their further career path. Former volunteers mentor the younger generation by sharing their own positive experiences with them.

## ONE KEY FACTOR IS THE VARIETY OF OFFERS

In the education seminars it is responsible for, Berlin’s association for the cultural education of young people Landesvereinigung Kulturelle Jugendbildung (LKJ) not only provides offers with regard to its own arts-related projects but also makes it possible for the volunteers to learn more about the contents and methods of work aimed at strengthening democracy or public relations work.

## CULTURAL WORK COMBINED WITH SOCIAL RESPONSIBILITY

The FSJ Kultur community service volunteering projects also extend to Berlin’s entire cultural environment. Over the past few years, more offers aimed specifically at people with a lived refugee experience have therefore been created. All of this not only encourages the young adults to take civic but also social responsibility.

## THE ESF MAKES IT POSSIBLE FOR...

... smaller facilities with fewer financial resources to cover the labour costs of the volunteers.

## THE ESF IMPROVES PEOPLE’S PROSPECTS

The participants not only develop job-related skills and methods but also numerous personal skills such as team-working skills and presentation confidence. They can also gain an insight into a wide range of jobs in this field and can actively contribute to their contents.

## SPECIFICALLY, THE ESF THEREFORE PROMOTES ...

- ... the exploration of various career paths by the participants and their civic engagement.
- ... the active involvement of the participants in Berlin’s cultural environment and their active contribution to the establishment of cultural structures.
- ... the personal development of the participants and their acquisition of job-and method-related skills.

### FUNDING AT A GLANCE

**Funding priority:**

Objective C, investing in education, training and vocational training for skills and life-long learning

**Funding instrument:**

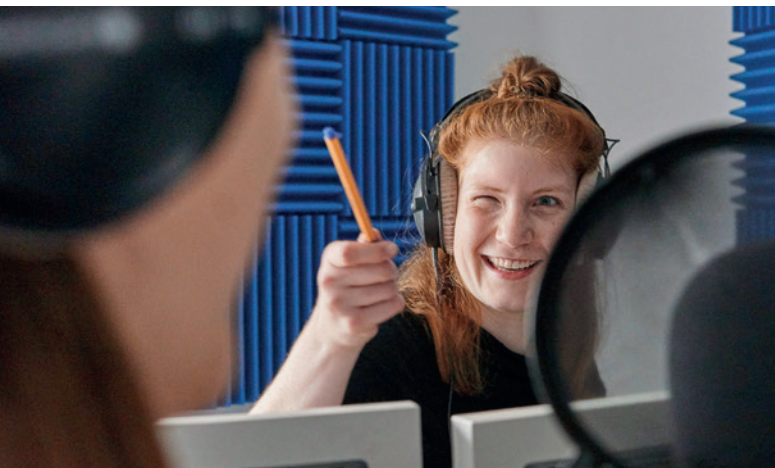
23C: Youth volunteering culture (“Jugend-Freiwillig-Kultur, JFK), including volunteering in the youth organisations of the Berlin Senate Department for Education, Youth and Families

**Project period:** 1 September 2020–31 August 2021

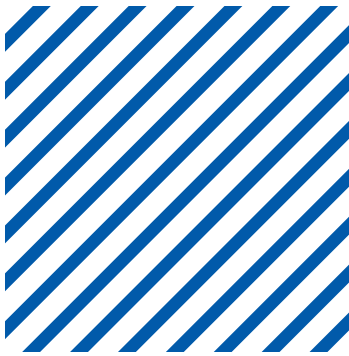
**ESF funding:** €256,909.42

**Beneficiary organisation internet address:**

[www.lkj-berlin.de](http://www.lkj-berlin.de)







**“A COMMUNITY SERVICE VOLUNTEERING YEAR IN A CULTURAL PROJECT PROMOTES THE CIVIC ENGAGEMENT OF YOUNG PEOPLE AND PROVIDES CAREER GUIDANCE. THE CULTURAL ORGANISATIONS PROFIT FROM THE YOUNG PEOPLE’S IDEAS.”**

Katrin Hukal, Project Manager, Landesvereinigung Kulturelle Jugendbildung Berlin e. V. (LKJ)



# FÖJ – COMMUNITY SERVICE VOLUNTEERING YEAR IN AN ECOLOGICAL PROJECT

A Vereinigung Junger Freiwilliger (VJF) community service volunteering year with an ecological project (“Freiwilliges Ökologisches Jahr, FÖJ”) gives young adults the opportunity to gain some hands-on work experience after leaving school. The FÖJ makes it possible for young people to enter the labour market more gradually. The volunteering placements cover a wide variety of organisations, from the local natural history museum and animal shelters to organisations that represent the political interests of specific groups.

## HORIZON EXPANSION IS ONE OF THE KEY PROJECT OBJECTIVES

Many of the projects are linked to each other and active beyond Berlin. Independent of this, 25 seminar days are also part of the FÖJ programme. Three pedagogues focus solely on the theoretical further education of the participants.

## THE ESF MAKES IT POSSIBLE FOR ...

... the FÖJ to have the financial security that is necessary for the realisation of the project. The money is also paid directly to the volunteers. The ESF inspections also guarantee the high quality of the FÖJ.

## BETTER CHANCES ON THE LABOUR MARKET

The participants come from secondary as well as higher secondary schools. Encouraging disadvantaged young adults by giving them access to opportunities which they might otherwise not have on the labour market is a very important aspect. In this respect, the organisation’s pedagogues play a key role, as they above all have the time to intensively engage with the young people. At the end of the year, all participants receive a participation certificate that will make it easier for them to enter the labour market.

## THE ESF IMPROVES PEOPLE’S LOCAL PROSPECTS

However, during their volunteering year with the FÖJ, the young people not only develop job-related skills. They also make obvious progress with regard to their personal and communication skills. During their year with the FÖJ, the young people also learn to participate in political processes.

## SPECIFICALLY, THE ESF THEREFORE PROMOTES ...

- ... an increasing and further development of the participants’ ecological awareness.
- ... the participants’ skills with regard to learning to take responsibility.
- ... the personal development of the participants and their awareness of political participation opportunities.

### FUNDING AT A GLANCE

**Funding priority:**

Objective C, investing in education, training and vocational training for skills and life-long learning

**Funding instrument:**

22: Freiwilliges Ökologisches Jahr (FÖJ)

**Project period:** 1 September 2020–31 December 2021

**ESF funding:** €535,500

**Beneficiary organisation internet address:** [www.vjf.de](http://www.vjf.de)







**“EVERY YEAR, 85 YOUNG PEOPLE INCREASE THEIR ECOLOGICAL AWARENESS IN THE COURSE OF A COMMUNITY SERVICE VOLUNTEERING YEAR IN AN ECOLOGICAL PROJECT AND SHARE THIS WITH OTHERS IN THEIR PERSONAL ENVIRONMENT.”**

Roman Kühn, FÖJ Project Coordinator,  
Vereinigung Junger Freiwilliger e. V.



# COOPERATIVE MENSCH

Cooperative Mensch provides supported vocational training to people with disabilities in a sheltered environment and enables them to contribute directly to the day-to-day operations during placements in facilities. At the end of the training, they gain an Industry of Chamber and Commerce vocational skills certificate that is recognised throughout Germany.

## COMPREHENSIVE VOCATIONAL TRAINING

At Cooperative Mensch, the trainees learn all the skills they need to work full-time.

## THE ESF MAKES IT POSSIBLE ...

... to offer an alternative to the previous supported employment structures and to establish the completely new and necessary processes for this model project. The internal staff can cover certain activities, and can even offer one-on-one support in specific facilities.

## HANDS-ON EXPERIENCE AND VOCATIONAL TRAINING GO HAND IN HAND

It is important to the initiative that the staff at the vocational training facility initially get to know the potential vocational trainees. Work experience placements are a suitable method to facilitate this.

## THE ESF IMPROVES PEOPLE'S PROSPECTS

Cooperative Mensch aims to offer improved access to hands-on vocational training in a facility with its offer, and to improve the future prospects of young people with learning disabilities and from various social backgrounds at the facility where they have completed their vocational training.

## SPECIFICALLY, THE ESF THEREFORE MAKES IT POSSIBLE FOR ...

- ... young people with learning disabilities to gain access to hands-on vocational training in an actual facility.
- ... the vocational trainees to have good prospects of subsequent employment in the facilities where they completed their training.

## FUNDING AT A GLANCE

**Funding priority:**

Objective B, promoting social inclusion, combating poverty and any kind of discrimination

**Funding instrument:**

11: Vocational qualification and inclusion of people with disabilities

**Project period:** 1 August 2020-31 December 2021

**ESF funding:** €2,479,275.03

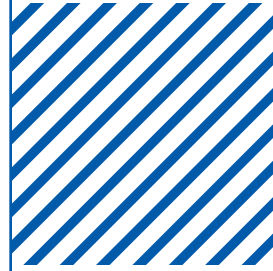
**Beneficiary organisation internet address:**

[www.cooperative-mensch.de](http://www.cooperative-mensch.de)



**“COOPERATIVE MENSCH FACILITATES VOCATIONAL TRAINING FOR PEOPLE WITH DISABILITIES IN THE FORM OF A DUAL LEARNING SYSTEM ORGANISED BY THE CHAMBER OF COMMERCE AND INDUSTRY. THIS REPRESENTS GENUINE INCLUSION.”**

Sieghard Gummelt, Press Officer,  
Cooperative Mensch



# SOZIAL 2.0 – REDISCOVERING CAREERS IN SOCIAL CARE!

The wortlaut Sprachwerkstatt project “Sozial 2.0” aims to help job seekers in gaining optimum access to vocational training, employment or completely new career options. The project offers relevant digital workshops, an internship that lasts around ten weeks, intensive personal support, advice and regular coaching. The project also encourages people to opt for or return to careers in social care. Over the years, a wide and strong network has developed with over 20 partner facilities.

## THE FOCUS IS ON EQUAL OPPORTUNITIES

The project welcomes anyone who is interested in a career in social care. Offers for people with a migrant background as well as women are key elements of the project to make it possible for all groups of people to have equal opportunity access to the labour market.

## THE ESF MAKES IT POSSIBLE FOR ...

... the project to provide an offer that is adapted to various groups of people.

## WIN-WIN SITUATION

The participating facilities benefit from the offer as the internships give them the chance to get to know potential future employees within the scope of the project, and to potentially offer them ongoing employment either in the form of training for career changers or vocational training.

## THE ESF IMPROVES PEOPLE’S PROSPECTS

The innovative approach of Sozial 2.0 makes it possible to successfully address the shortage of skilled workers in the social care area.

## WITH THIS PROJECT, THE ESF THEREFORE SPECIFICALLY MAKES IT POSSIBLE FOR ...

- ... Berliners who are interested in a career in the social care sector to gain clarity about whether this is the right job for them, as well as employment prospects.
- ... highlight the attractiveness of this employment sector.
- ... childcare centres, out of school and social care facilities to receive qualified staff recruitment support.

## FUNDING AT A GLANCE

### Funding priority:

Objective B, promoting social inclusion, combating poverty and discrimination

### Funding instrument:

13: Innovative local model projects for promoting the employment of disadvantaged people (Partnerschaft-Entwicklung-Beschäftigung, PEB scheme)

**Project period:** 1 October 2020-30 June 2023

**ESF funding:** €246,130.06

### Beneficiary organisation internet address:

[www.wortlaut.de](http://www.wortlaut.de)







**“THE PROJECT SOZIAL 2.0 AIMS TO  
INSPIRE PEOPLE TO CONSIDER A  
CAREER IN THE SOCIAL CARE SECTOR  
AND TO PROVIDE THEM WITH OPTIMUM  
ACCESS TO VOCATIONAL TRAINING,  
EMPLOYMENT OR A COMPLETELY NEW  
CAREER.”**

Sascha Krüger, SOZIAL 2.0 - rediscovering careers in social care! Project Manager, wortlaut Sprachwerkstatt

# ZUKUNFT IM BERUF (ZIB) – CAREER DEVELOPMENT SUPPORT AT VOCATIONAL COLLEGES

The project is related to the careers programme “Integrierte Berufsausbildungsvorbereitung” (IBA) at schools in Berlin offered by “Verein Arbeit und Bildung” within the scope of its project “Zukunft im Beruf” at five of the city’s 38 Oberstufenzentrum colleges of further education/vocational colleges.

## INDIVIDUAL MENTORING IS WHAT IT’S ALL ABOUT

All young adults who take part in this careers programme training course receive an individual offer for one-on-one career guidance. The mentoring includes help with the preparations for the job application process, preparation of job application documents or also help with the search for suitable internships or work experience placements, as well as the setting of specific learning tasks whose outcomes are included in their overall grades.

## THE ESF MAKES IT POSSIBLE ...

... to develop the „Zukunft im Beruf“ careers programme further and to utilise the respective expertise where it is needed. The ESF guarantees this through payment of the expert staff’s salaries as well as the cost of the associated materials.

## IMPROVEMENT OF THEIR SITUATION IN LIFE

As social aspects often pose obstacles to learning, education experts also help the young people to improve their situation in life.

## THE ESF IMPROVES PEOPLE’S PROSPECTS

The target group not only includes students who are about to leave secondary school, but also the induction classes for refugees. The IBA course offers students, whose difficulties in adaptation often stem from the fact that their previous school education took place outside the German education system, the chance to transition from an induction class to a final secondary school class that leads to a certificate at the end of the school year.

## SPECIFICALLY, THE ESF THEREFORE MAKES IT POSSIBLE FOR YOUNG PEOPLE ...

- ... to attain a school leaving certificate despite a previously poor academic performance.
- ... successfully transition students from induction classes to secondary school final year classes.
- ... to improve students’ personal situation in life.
- ... to experience appreciation.
- ... to grow, increase their motivation and develop social behaviours.

### FUNDING AT A GLANCE

**Funding priority:**

Objective C, investing in education, training and vocational training for skills and life-long learning

**Funding instrument:**

17: Career development support at vocational colleges

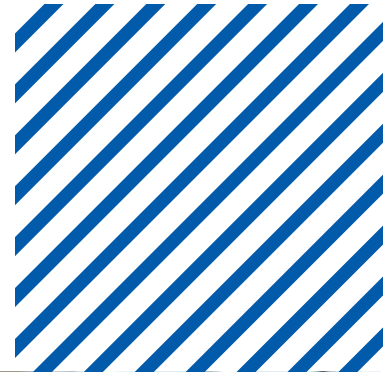
**Project period:** 1 September 2020–31 December 2021

**ESF funding:** €1,422,666.96

**Beneficiary organisation internet address:**

[www.aub-berlin.de](http://www.aub-berlin.de)





**“MANY STUDENTS CANNOT BE REACHED VIA MAINSTREAM EDUCATION OFFERS. WITH THE ZIB PROJECT, WE ENABLE THEM TO ATTAIN A HIGHER LEVEL SCHOOL LEAVING CERTIFICATE AND IMPROVE THEIR FURTHER CAREER PROSPECTS.”**

Susanne Neumann, Executive Project Manager,  
Arbeit und Bildung e. V.



# SOULINCUBATOR II

“Soulincubator II” promotes and supports sustainable business concepts in the form of a scholarship for startup founders. After the application phase, which ended in January 2022, a jury made up of social economy representatives selected the best ideas from all of the applications submitted. The startup founders with the best ideas then participate in a six-month incubation phase that includes intensive coaching or training measures as well as a financial grant.

## FOCUS ON SUSTAINABILITY

The project has the scope to focus on the social and ecological dimension of sustainability, as well as helping the participants with the business side. The training therefore also covers nonviolent communication, anti-racism and fair company structures as well as business models.

## THE ESF IMPROVES PEOPLE’S PROSPECTS

The participants receive two thousand Euros per month and the chance to pitch their concept to investors. These instruments can help to overcome social obstacles and inequalities. The project also takes diversity and gender identity into account during the selection of candidates.

## SPECIFICALLY, THE ESF THEREFORE MAKES IT POSSIBLE TO ...

- ... get closer to a sustainable, zero carbon future.
- ... ensure that young people, independent of their social background, origins or gender, receive assistance with setting up fair companies.

## FUNDING AT A GLANCE

**Funding priority:**

Objective A, promotion of long-term and high-quality employment and promotion of workforce mobility

**Funding instrument:**

5: Promotion of innovative startups

**Project period:** 1 January 2020-30 June 2023

**ESF funding:** €500,000

**Beneficiary organisation internet address:**

[www.soulbottles.de](http://www.soulbottles.de)



**“THE PLASTIC PROBLEM AND THE ISSUE OF SUSTAINABILITY ARE BIGGER THAN JUST A SINGLE APPROACH. SOLVING THEM CALLS FOR MANY SUSTAINABLE AND CLEVER IDEAS FROM STARTUP FOUNDERS.”**

Paul Kupfer, CEO, Soulproducts GmbH



# KÖPENICKER BIENENFREUNDE

Refugees often find social engagement in their new home country difficult. The beekeeping project “Köpenicker Bienenfreunde”, run by the charity Türöffner e. V. - Jobnetzwerk für Geflüchtete in Köpenick, is committed to promoting social interaction and to breaking the ice.

## A COMPREHENSIVE INTEGRATION APPROACH

Refugees are individually mentored; their needs are addressed and practical support is offered in the form of direct contact with potential employers or companies offering internships or work experience placements. Refugees receive assistance with overcoming bureaucratic hurdles, such as submitting proof of their qualifications, as well as individual job coaching. The project’s volunteers cooperate with job coaches. In addition, the project strengthens the community spirit in the neighbourhood.

## THE ESF IMPROVES PEOPLE’S PROSPECTS

Looking after bees together also inspires the local residents to become involved and to broaden their own horizon. This facilitates the increased social inclusion in Berlin of a particularly disadvantaged group.

## SPECIFICALLY, THE ESF THEREFORE MAKES IT POSSIBLE FOR...

- ... refugees to integrate into all areas of life and to find social engagement afterwards.
- ... Berlin to become more tolerant, and people of all ages and backgrounds can interact.

### FUNDING AT A GLANCE

**Funding priority:**

Objective B, promoting social inclusion, combating poverty and any discrimination

**Funding instrument:**

13: PEB (Partnerschaft-Entwicklung-Beschäftigung, innovative local model projects promoting the employment of disadvantaged people) AND LSK (Lokales Soziales Kapital, microprojects/local social cohesion)

**Project period:** 1 February 2021-1 December 2021

**ESF funding:** €9,998.75

**Beneficiary organisation internet address:**

[www.tueroeffner-ev.de](http://www.tueroeffner-ev.de)

**“WITH THE ,KÖPENICKER BIENENFREUNDE‘ BEEKEEPING PROJECT, WE PROMOTE THE SOCIAL INTEGRATION OF REFUGEES AND SUPPORT THEM BY GAINING IMPORTANT SKILLS.”**

Grit Driewer, Branch Manager, Türöffner e. V.







# JOBLINGE – PLAN A

The Joblinge gAG project “JOBBLINGE – Plan A” supports up to fifteen young people resident in the Steglitz-Zehlendorf district of Berlin who currently do not receive support from the local job and benefits agency. The aim is to help the participants to find a way out of their hopeless situation, to improve their situation in life long-term, and to help them to find a vocational training place or employment. Plan A supports the participants during this process for one year.

## A SUSTAINABLE CONCEPT LEADS TO SUCCESS

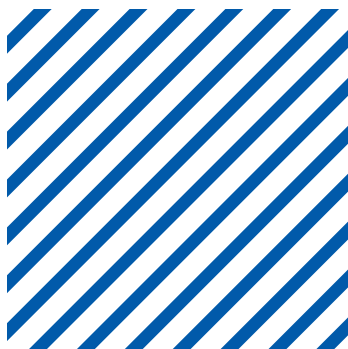
Within the scope of its previous projects in Berlin, the beneficiary organisation has already successfully found a suitable job or vocational training placement for three out of four young people. The approach is promising, as 78% of the people whom they helped in this way remained in the job or vocational training for long periods.

## THE ESF IMPROVES PEOPLE’S PROSPECTS

For young people, the participation means a chance to receive career guidance, job skills training, potentially find a job and to thereby improve their situation in life. The project makes it possible for them to overcome their lack of prospects.

## SPECIFICALLY, THE ESF THEREFORE MAKES IT POSSIBLE FOR ...

- ... the participants to overcome their challenges thanks to the support they receive, including counselling.
- ... people in Berlin who would otherwise receive no help at all to receive support.
- ... young people to receive career guidance, and to link up with potential employers or vocational training providers.



## FUNDING AT A GLANCE

**Funding priority:**

Objective C, investing in education, training and vocational training for skills and life-long learning

**Funding instrument:**

15: Integration of young adults into the labour market: career guidance and job skills

**Project period:** 1 October 2021-31 August 2023

**ESF funding:** €349,312.50

**Beneficiary organisation internet address:**  
[www.joblinge.de](http://www.joblinge.de)







**“WE AIM TO NOT ONLY IMPROVE THEIR PROSPECTS BUT TO ALSO PROVIDE LONG-TERM SUPPORT AND MENTORING.”**

Jonas Hettwer, Regional Manager Berlin, Joblinge gAG

# LEGAL NOTICE

## PUBLISHED BY

Juliane Anton  
Senate Department for Economics, Energy and Public Enterprises  
ESF Administration Office  
Martin-Luther-Straße 105  
10825 Berlin  
Phone: +49 30 9013-7518  
Fax: +49 30 9013-7520

Email: [esf@senweb.berlin.de](mailto:esf@senweb.berlin.de)

## EDITING AND LAYOUT

ariadne an der spree GmbH  
Torstraße 107  
10119 Berlin  
Phone: +49 30 259 259 27  
Email: [esf@ariadne-an-der-spreede.de](mailto:esf@ariadne-an-der-spreede.de)

Date: December 2022

## IMAGE CREDITS

P. 7: Stockphoto Mania; Seventyfour  
P. 8, p. 9: Elli Strauven-Dejean  
P. 10, p. 11: Landesvereinigung Kulturelle Jugendbildung Berlin e. V.  
P. 12, p. 13: Vereinigung Junger Freiwilliger e. V.  
P. 14: Amy Hirschi  
P. 15: Andi Weiland  
P. 16: pressmaster  
P. 17: WavebreakMediaMicro  
P. 18: pressmaster  
P. 19: BullRun  
P. 20, p. 21: Kai Rußwurm  
P. 23: Gabriele Senft  
P. 24, p. 25: Sophia Beck



