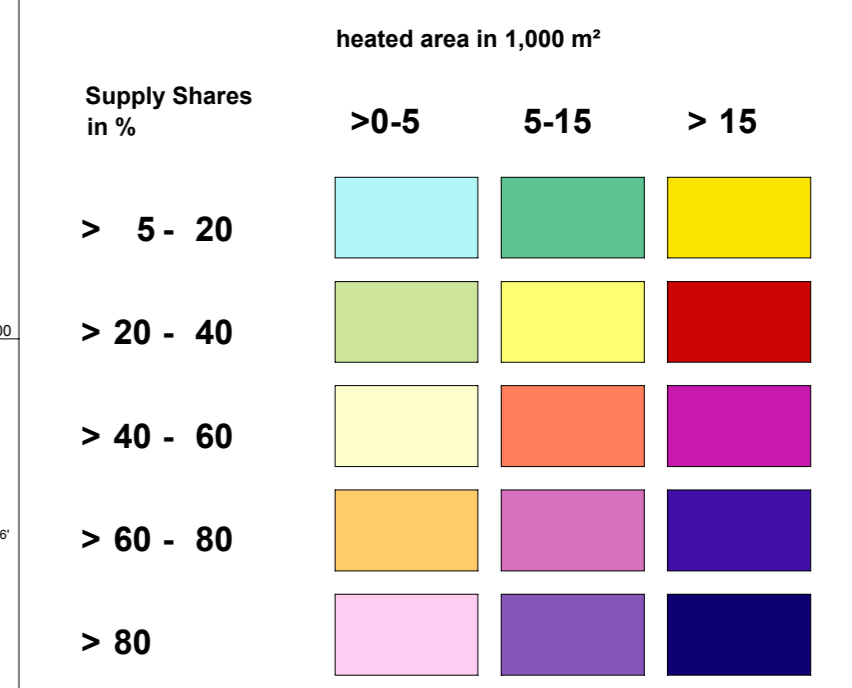
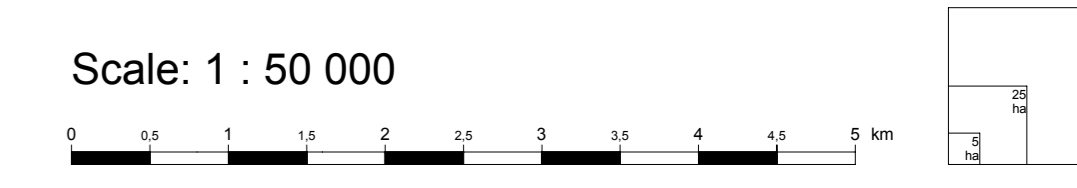
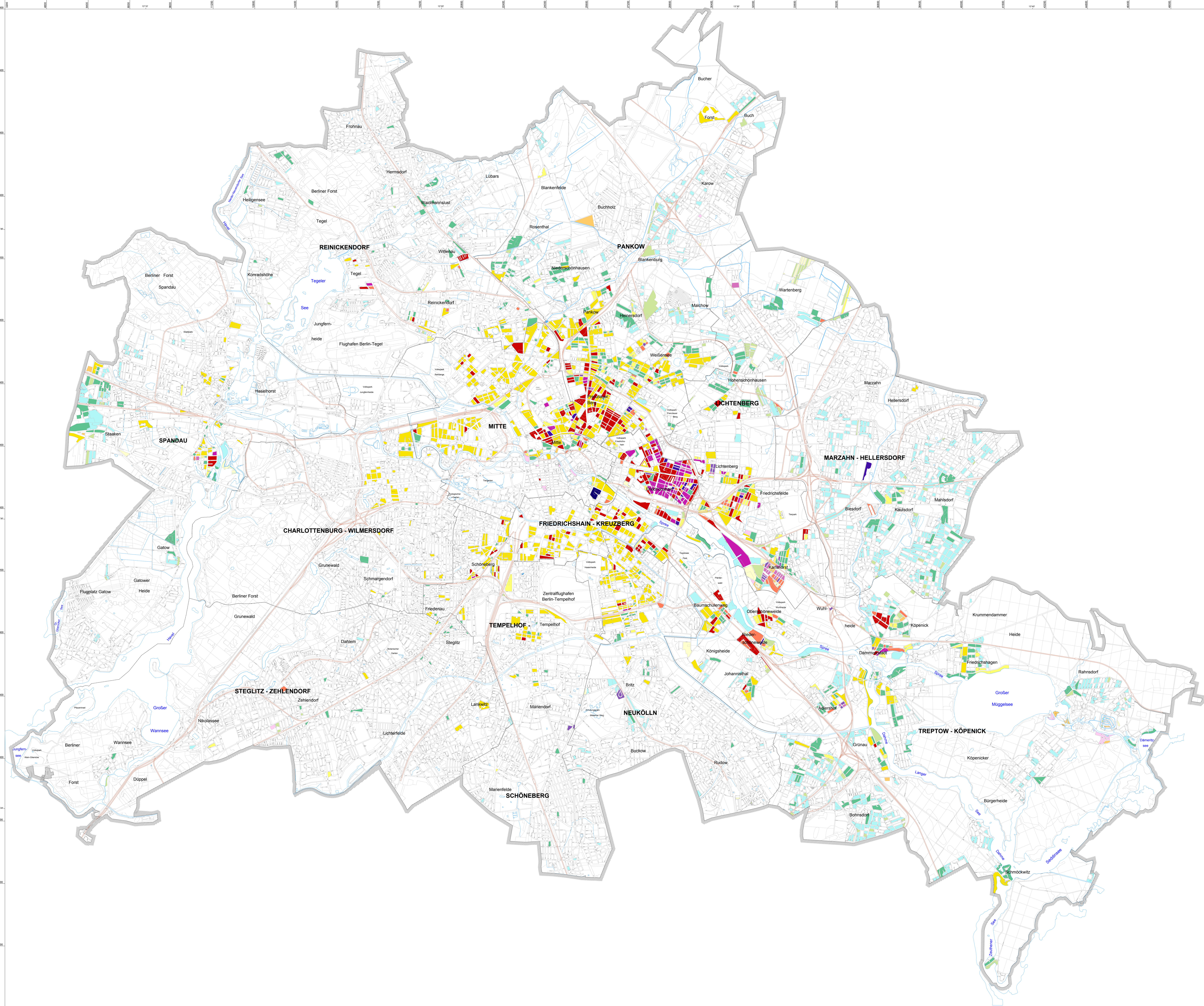


Building Heating Supply Areas Coal Heating Supply Areas

Supply Shares of the Total Heated Area



1. This map shows the shares of the most important heating-energy types, by area. The share of regenerative energy sources (solar and wind power), represented by approx. 3,700 small facilities does not as yet constitute a significant factor. The nighttime power heating supply area represents the dominant share among the heating types in only a few areas (see Map 08.02); the total area share is, however, minimal (approx. 1.2%), so that a separate map has not been prepared.
2. In the case of district heat, the fact that different primary energy sources (coal, oil, gas) are used for heat generation, depending on location, must be taken into account. These shares are shown in Map 08.02.2.
3. The distribution of heating types represented reflects the state of information as of 2000 for all energy carriers. It describes the result of large-scale transition to other heating types since the last inventory in 1994. Especially in the eastern part of Berlin a large-scale replacement of individual and collective coal heating facilities took place. Work-place heating was not ascertainable in all cases.



Published by: Berlin Department of Urban Development
Special Section Communication

Conception: Referat III F (Informationssystem Stadt und Umwelt)
Text: III F
Editing: III F
Data: Emissionskataster Hausbrand Senatsverwaltung für Stadtentwicklung - IX D, Stand 2000
Data Processing and Map Production: Geoinfo, C.Nitzsche; IX B 2 unter Verwendung des Informationssysteme Stadt und Umwelt
Cartographic Design: III F
Colour scheme: III F
Reproduction: November 2004
Based on the Map: Digitale Arbeitskarte des ISU, 1 : 50.000; (ISU 50), Stand 2000
This map is copyright protected. Reprinting or any other form of reproduction only with prior permission.
Updated Edition 2005
Internet-Address: <http://www.stadtenwicklung.berlin.de>