

Integration of Gender Budgeting in the budget planning document of Berlin

Klaus Feiler

Head of budget department,
Senate administration for finance Berlin

Federal Republic of Germany



Political structure:

Federal parliamentary republic of 16 states (Bundesländer) ; bicameral Parliament (Deutscher Bundestag, Bundesrat)

Capital and largest city is Berlin (3.4 million inhabitants)

| | |
|---------------------------|---|
| Area: | 137,847 sq mi (357,000 km²) |
| Population: | 82,400,000 (July 2007) |
| GDP: | US\$ 34,400 per capita (2007 est.) |
| Growth rate: | 2.6 % (2007 est.) |
| Unemployment rate: | 9.1 % (ILO standard) |
| Budget: | US\$ 1.477 trillion (2007 est.) |
| Public debt: | 65.3 % of GDP (2007 est.) |
| Fiscal year: | calendar year |

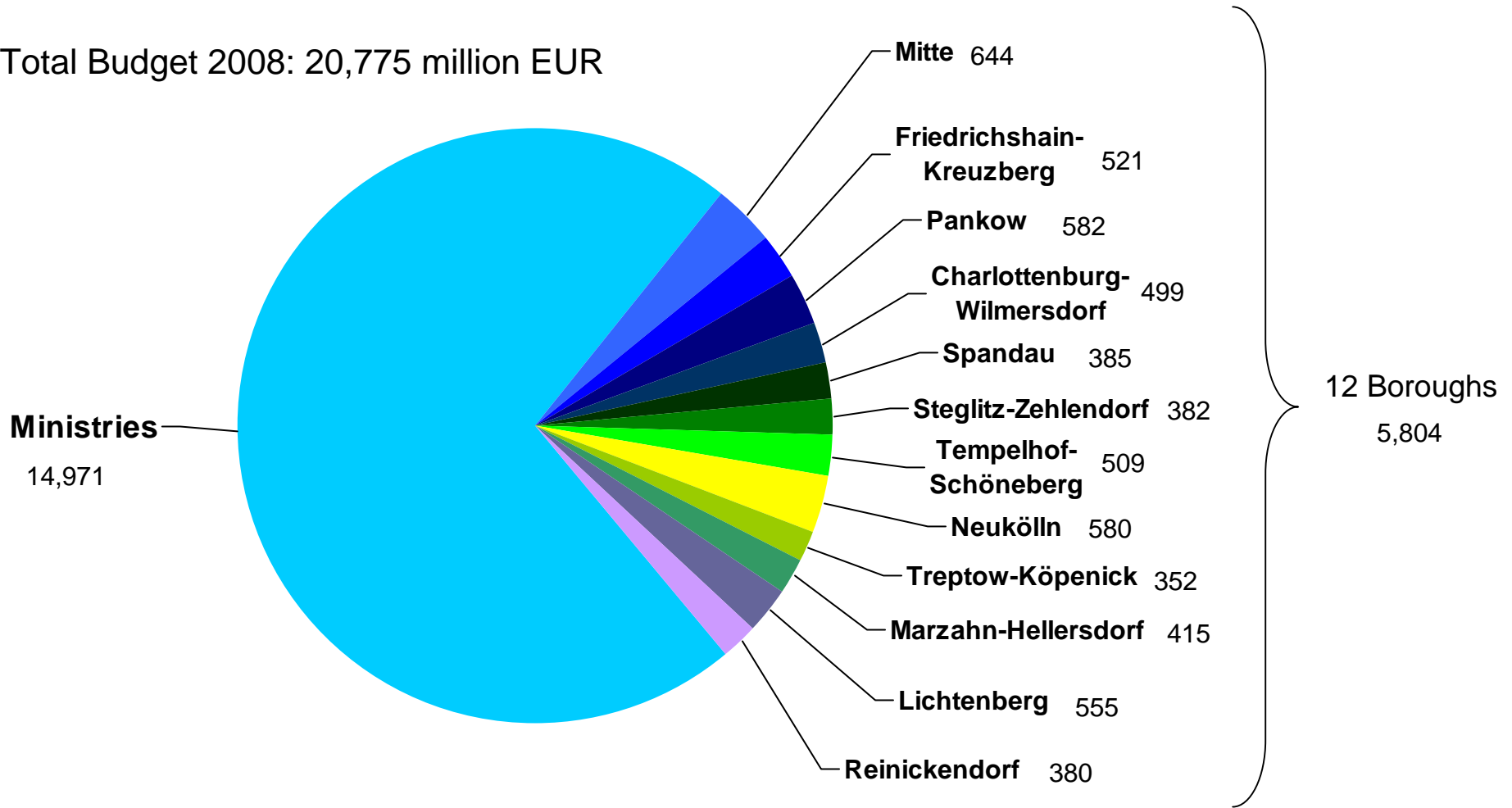
Land Berlin



| | |
|---------------------------|---|
| Area: | 343 sq mi (889 km ²) 12 districts |
| Inhabitants: | 3,405,000 (2007) |
| GDP: | US\$ 124,510 million (2007 est.) (82.6 bill. EUR) |
| GDP per capita: | US\$ 36 600 (2007 est.) (24,260 EUR) |
| Growth rate: | 1.7 % (2007 est.) |
| Unemployment rate: | 16.3 % (Dec. 2007) |
| Budget: | US\$ 30,060 million (2007) (20.3 bill. EUR) |
| Balanced budget: | yes (2007) |
| Public debt: | US\$ 89,030 million (2007) (60.1 bill. EUR) |
| Debt per capita: | US\$ 26,190 (2007) (17,600 EUR) |
| Staff: | 110,750 (2007) 207,150 (1991) |

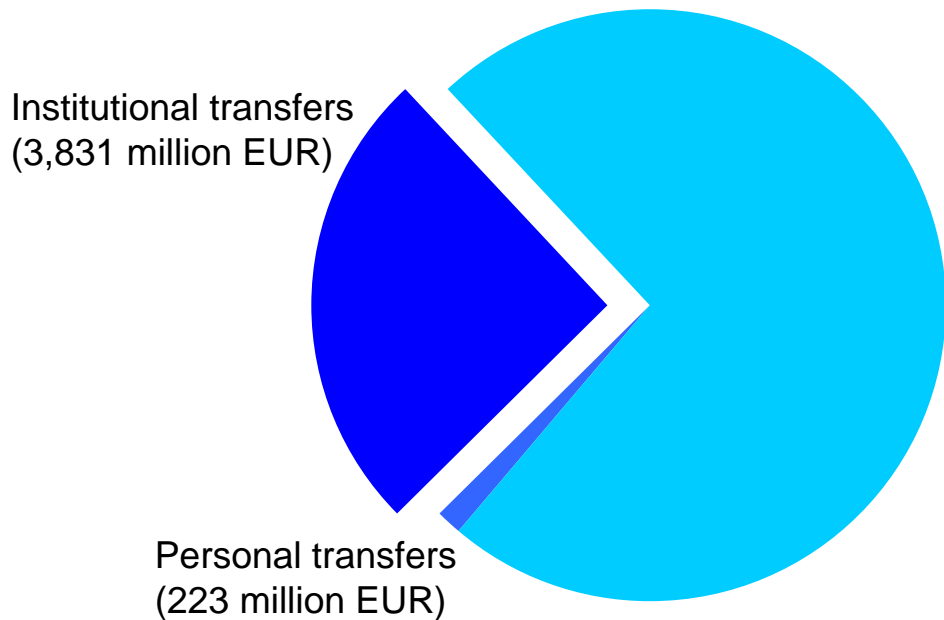
Land Berlin: Budget structure

Total Budget 2008: 20,775 million EUR

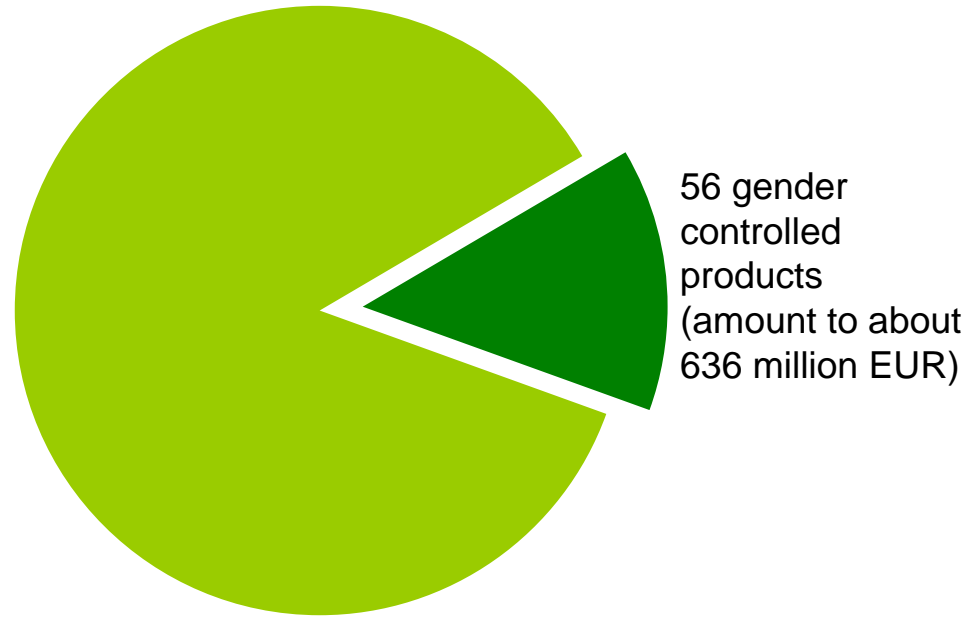


Land Berlin: Budgetary steering parameter

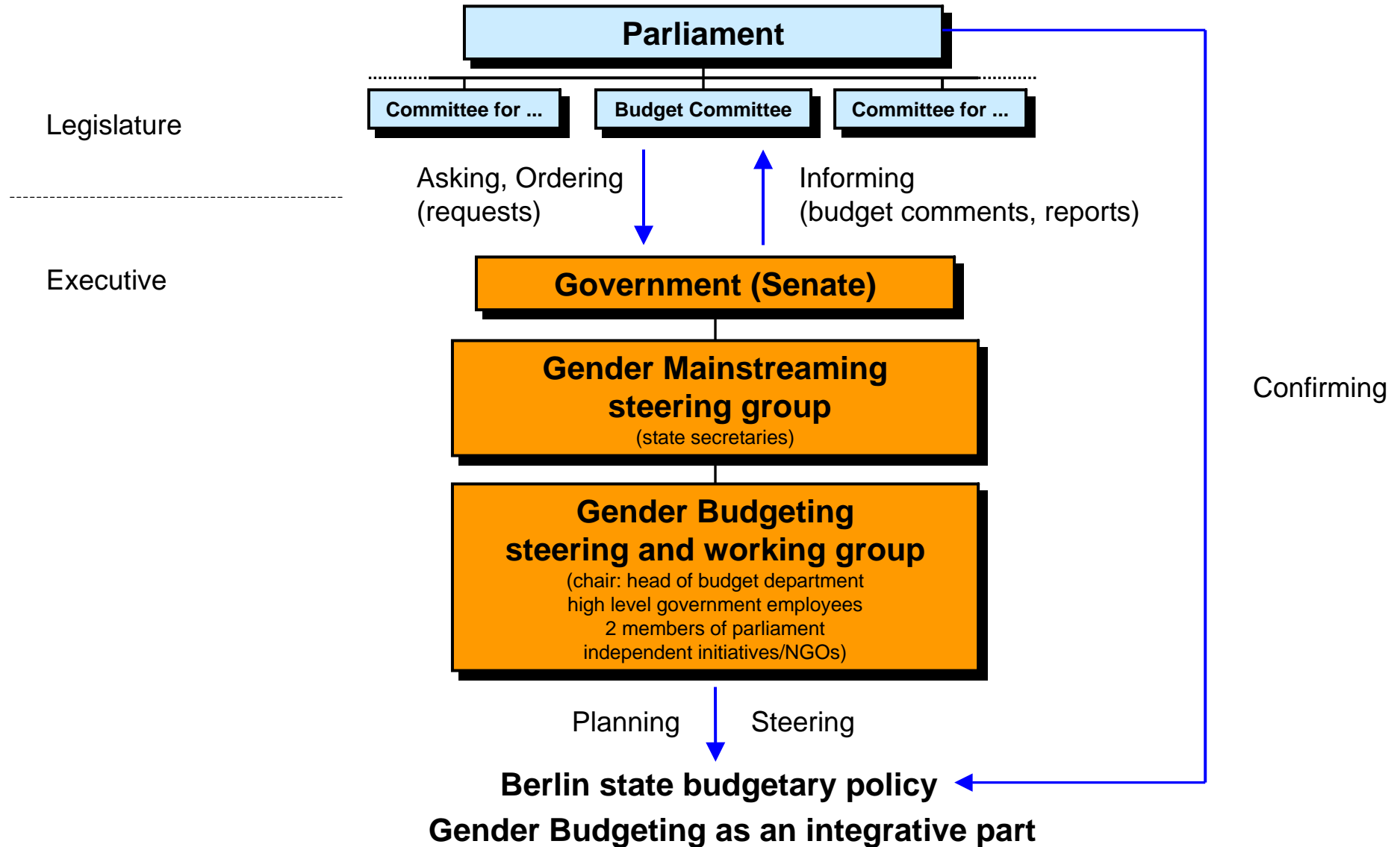
Ministries:
Items of the budget
(cash-based accounting)
(total: 14,971 million EUR)



Boroughs:
Products
(cost and activity accounting)
(total: 400, amount to 3,510 million EUR)



Organisational structure



Berlin's three step model: An example of good practice

- ❑ Achieve transparency: analysis of primary beneficiaries
- ❑ Extent analysis: involve secondary beneficiaries
- ❑ Steering by objectives

Berlin's three step model

- Achieve transparency: analysis of primary beneficiaries
 - pilot phase
 - preparatory training

 - budget 2006 / 2007: specific benefits of public expenditure
 - collection and compilation of data: absolute and relative
 - identification of most relevant issues
 - current transfers at city level
 - 56 services at borough level

Berlin's three step model

- Extent analysis: involve secondary beneficiaries
 - budget 2008 / 2009
 - concentration on recipients of public funds
 - agreements with recipients to provide necessary information
 - gender information one of many types of information in the budget plan
 - gender budgeting as an integrative part of normal budgeting process

Berlin's three step model

□ Steering by objectives

Definition of gender-specific objectives



Meaningful policy analyses



Strategic conclusions for better government

Final stage: full integration of gender budgeting as a steering mechanism into the parliamentary budgetary process

The Berlin example: How to achieve good practice

- ❑ clear demands and requests by parliament and government
- ❑ clear formal structures, leading role for Ministry of Finance
- ❑ integration into the yearly budgeting process instead of additional reporting mechanism
- ❑ working together, learning together, learning by doing
- ❑ be practical, do not annoy people with too much theory
- ❑ bring together government officials, parliament, NGO and other experts
- ❑ not yet achieved: to persuade more members of parliament of active collaboration

Topics of Gender analysis and steering in the ministries

- Vocational training (master)
- Premium for private companies
- Advancement of sports
- Advancement of handicapped children
- Government grants to
 - Social facilities
 - European Academy
 - Universities

Topics of Gender analysis and steering in the boroughs

- Music schools
- Public libraries
- Sports facilities
- Youth welfare aid
 - Youth leisure facilities
 - Ambulant care

Topics of Gender analysis and steering in the boroughs

□ Gender-Goals of youth welfare aid

- Balancing gender interests and encouraging reflection on gender related issues are at the core of the educational concept
- Experts in the area of public and private family assistance should have a heightened awareness of gender specific educational methods
- Society's prevailing orientation towards the genders is critically viewed in order to show opportunities for reducing barriers
- Educators work in a team with a flat hierarchy and encourage a constructive dialog among team members
- Continual reflection on gender relations within the team - including roles assumed and active participation with respect to gender specific attitudes, actions and communication – is achieved within the team process